

Application: Adobe Photoshop 4.0 or higher is recommended. Version 5.5 was used for this document.

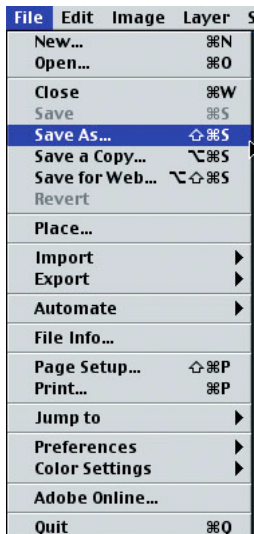
1. Launch the Adobe Photoshop application.
2. Select File > Open from the menu bar and establish path to the desired file(s).

Step 1: Flatten the Image



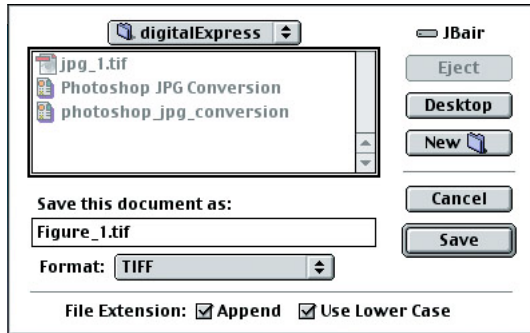
1. From the Photoshop Layer menu:
Select: Flatten Image

Step 2: Save the File as a TIFF



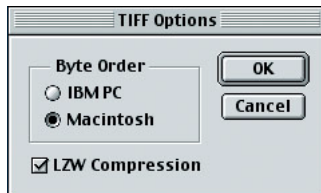
1. From the Photoshop File menu:
Select: Save As . . .

Step 3: The “Save As” Dialog Window



1. Set the file path
2. From the Format menu: select: TIFF
3. Click the Save button

Step 4: Set TIFF Options



1. Select Macintosh Byte Order
2. Select LZW Compression
3. Click the OK button